



MONTHLY MEMBERSHIP PROGRESS REPORT

District 321B2

Results as of: 5/31/2015

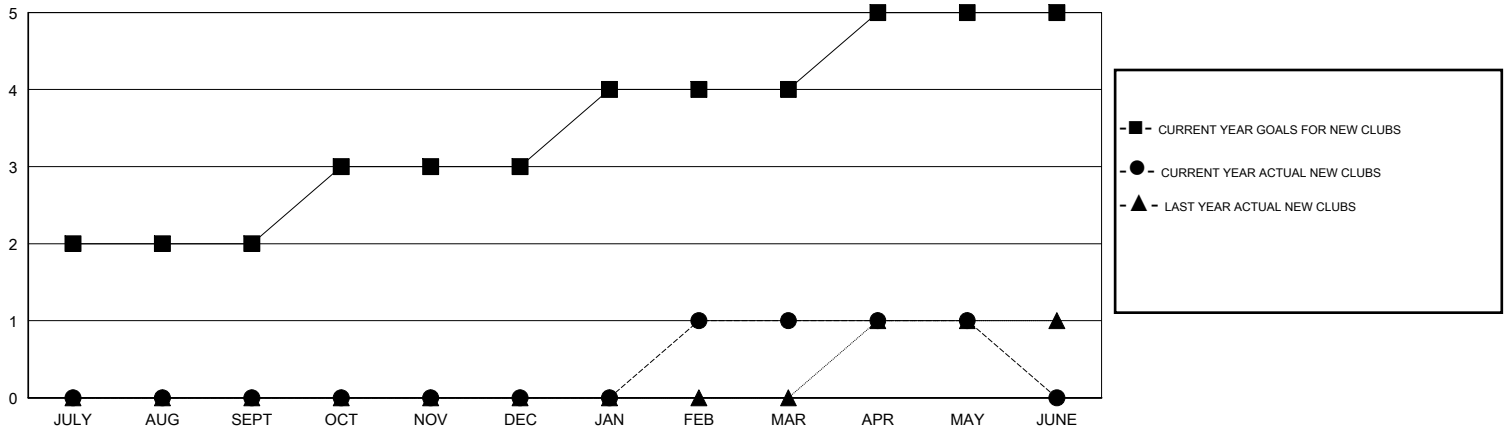
GMT: V S Kukreja

LOCATION INDIA

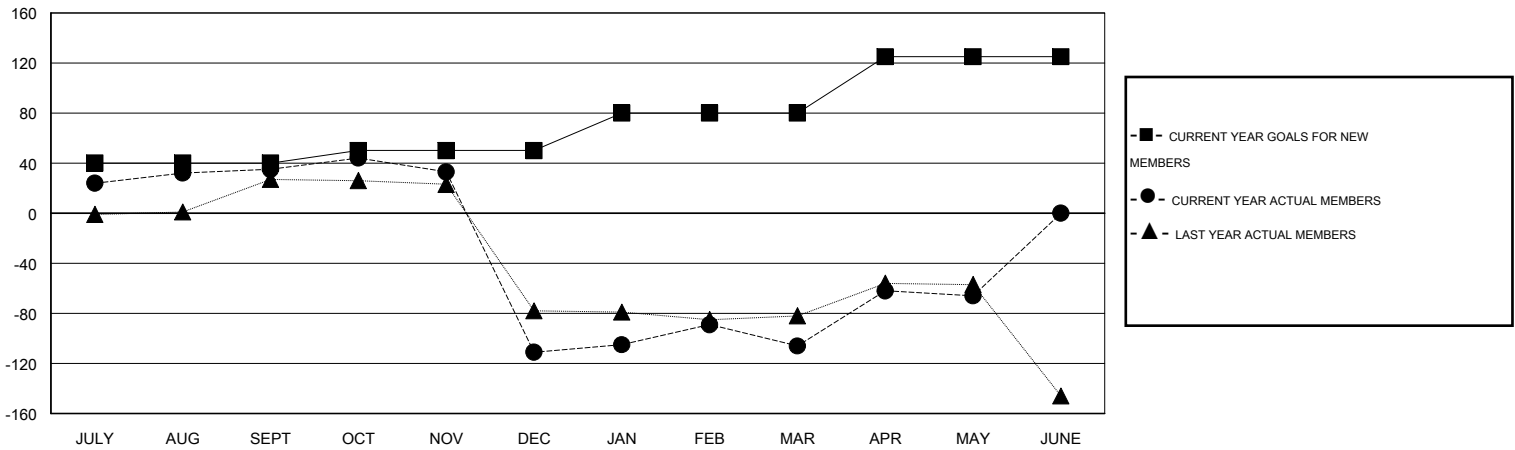
GMT CA 6

| Clubs | | | | | Members | | | | |
|-----------------------|---------------|-----------|---------------|---------------|-----------------------|-----------------|-------------------------------|-----------------|---------------|
| RESULTS FOR 2014-2015 | | | | | RESULTS FOR 2014-2015 | | | | |
| QUARTER | NEW CLUB GOAL | NEW CLUBS | DROPPED CLUBS | NET GAIN/LOSS | QUARTER | NEW MEMBER GOAL | CHARTER AND NEW MEMBERS ADDED | DROPPED MEMBERS | NET GAIN/LOSS |
| JULY/AUG/SEPT | 2 | 0 | 0 | 0 | JULY/AUG/SEPT | 40 | 48 | 13 | 35 |
| OCT/NOV/DEC | 1 | 0 | 4 | -4 | OCT/NOV/DEC | 10 | 23 | 169 | -146 |
| JAN/FEB/MAR | 1 | 1 | 2 | -1 | JAN/FEB/MAR | 30 | 39 | 34 | 5 |
| APR/MAY/JUNE | 1 | 0 | 0 | 0 | APR/MAY/JUNE | 45 | 46 | 6 | 40 |

GOALS AND ACTUAL NEW CLUBS CUMULATIVE



GOALS AND ACTUAL MEMBERS CUMULATIVE



| | | |
|---|---|---|
| DROPPED CLUBS: 6 | 22 CLUBS OF 43 ADDED 1 OR MORE NEW MEMBERS | GENDER DISTRIBUTION MALE 840 (73.30%) FEMALE 306 (26.70%) |
| DROPPED MEMBERS DECEASED 4 CLUB CANCELLED 168 OTHER 50 TOTAL 222 | CLICK HERE FOR HEALTH ASSESSMENT DATA | FAMILY UNIT MEMBERS 545 HEAD OF HOUSEHOLD 232 NON-HEAD OF HOUSEHOLD 313 |